

# 01

"Your Best,  
Your Growth,  
Your Future"

## Brighton High School Profile 22-23



### Mission Statement

Brighton Area Schools, together with our community, will engage every student in a quality learning experience, empowering each student to become a thoughtful, life-long learner in an environment of mutual trust and respect.

### Brighton Community

Brighton Area Schools is located in the southeast corner of Livingston County. The district encompasses an area of 56.8 square miles and consists of the City of Brighton as well as parts of the townships of Genoa, Hamburg, Green Oak and Brighton. The area consists mainly of suburban rural development, with the City of Brighton as the center. The City is the major trading center and the site of many small businesses and industries.

# 02

# ABOUT US

## BRIGHTON AREA SCHOOLS

The district is located between the metropolitan areas of Detroit and Lansing. Thirty minutes to the south lies the City of Ann Arbor. Due to this location and the convenience of two major expressways, Brighton has become a "bedroom community" of all of these major metropolitan areas.

The Brighton School District consists of seven schools, four elementary schools contain grades Kindergarten through Fourth; one intermediate school educates students in grades five and six; one middle school holds grades seven and eight; and a traditional high school and an alternative high school each educate students in grades nine through twelve.

In addition, our Community Education Department offers a variety of academic, vocational, leisure and recreational opportunities. These programs and services are developed in conjunction with the K-12 program through our partnership with community agencies, businesses and organizations.

The Livingston Education Service Agency (LESA) serves as the county resource for special education services as well as teacher and administrative support. Located in Howell, LESA serves the six school districts in Livingston County as well as serving charter and non-public schools within the county.



**BAS Total Enrollment: 5804**

**Per Pupil Expenditure: \$9150**

**BHS Total Enrollment: 1963**

Brighton High School offers a comprehensive college-prep curriculum for students in grades 9-12. Students have more than 175 education options, including 18 Advanced Placement and 4 Honors courses. Career vocational training classes are offered through a countywide consortium. Students also have the opportunity for dual enrollment classes and work based learning experiences. Brighton High School operates on a traditional six hour day, with each class meeting daily for 56 minutes. The maximum class size is 33. An advantage of Brighton High School is the accreditation from Cognia.

## **Graduation Requirements**

Brighton High School is an 8 semester high school. One semester of course work equals .5 credits. The number of credits required to graduate from Brighton High School is 22.

English 4 Credits  
Mathematics 4 Credits  
Science 3 Credits  
Social Studies 3 Credits  
Physical Education .5 Credits  
Health .5 Credits  
Visual/Performing/Applied Arts 1 Credit  
World Language 2 Credits  
Electives 6 Credits

# Grading System 04

Brighton uses the following grading system for non-Advanced Placement Courses:

■	A = 4.0, A- = 3.67, B+ = 3.33, B = 3.0,
■	B- = 2.67, C+ = 2.33, C = 2.0, C- = 1.67,
■	D+ = 1.33, D = 1.0, D- = 0.67, E = 0.0

Brighton uses the following grading system for Advanced Placement Courses:

■	A = 5.0, A- = 4.67, B+ = 4.33, B = 4.0
■	B- = 3.67, C+ = 3.33, C = 3.0, C- = 2.67
■	D+ = 2.33, D = 2.0, D- = 1.67, E = 0.0

G = Pass/Credit \*

W = Withdrawal, No Credit \*

= No point Value



05

# CLASS OF 2022 PROFILE

Student Body Size: 1963

Senior Class Size: 504

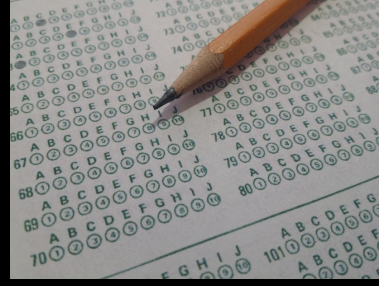
% of 2022 Graduates Attending College  
4-year: 67%, 2-Year: 16%, Undecided: 8%,  
Trade: 4%, Workforce: 2%, Military: 1%.

Summa Cum Laude: 144

Magna Cum Laude: 93

Cum Laude: 53

National Honors Society: 130



# 06

# STANDARDIZED TEST SCORE DATA

BHS Average SAT Composite	1085
State Average SAT Composite	957
BHS Average SAT Evidence Based Reading and Writing 75% Met Benchmark	545
BHS Average SAT Math 57% Met Benchmark	540



# ADVANCED PLACEMENT CLASSES

Brighton High School offers 18 Advanced Placement Courses, open to students 10th-12th Grade.

## 2022 Advanced Placement Results:

Total AP Students: 522

Total AP exams taken: 894

Scores of 3 or Higher: 395 / 76%