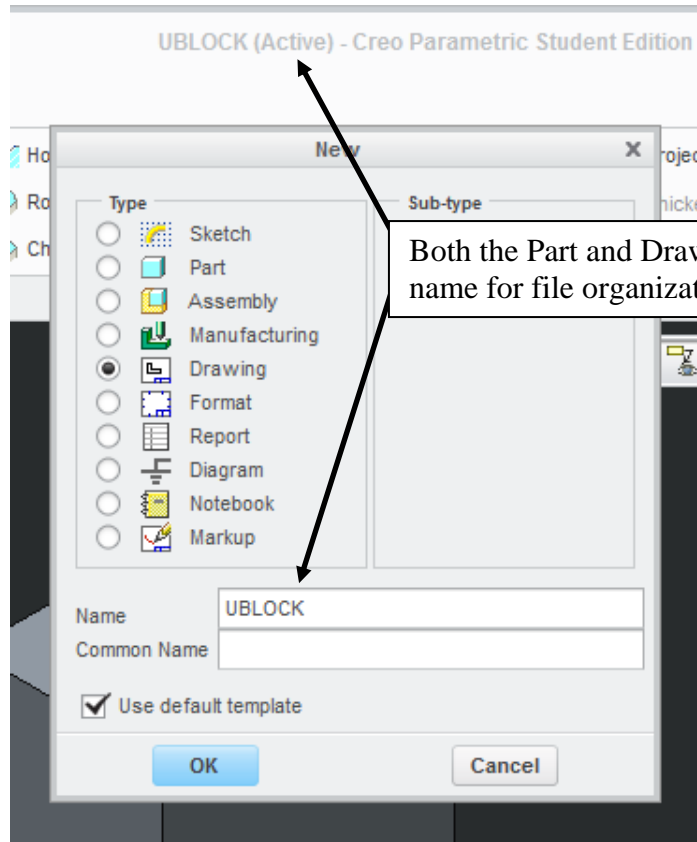


# Setting up a New Drawing

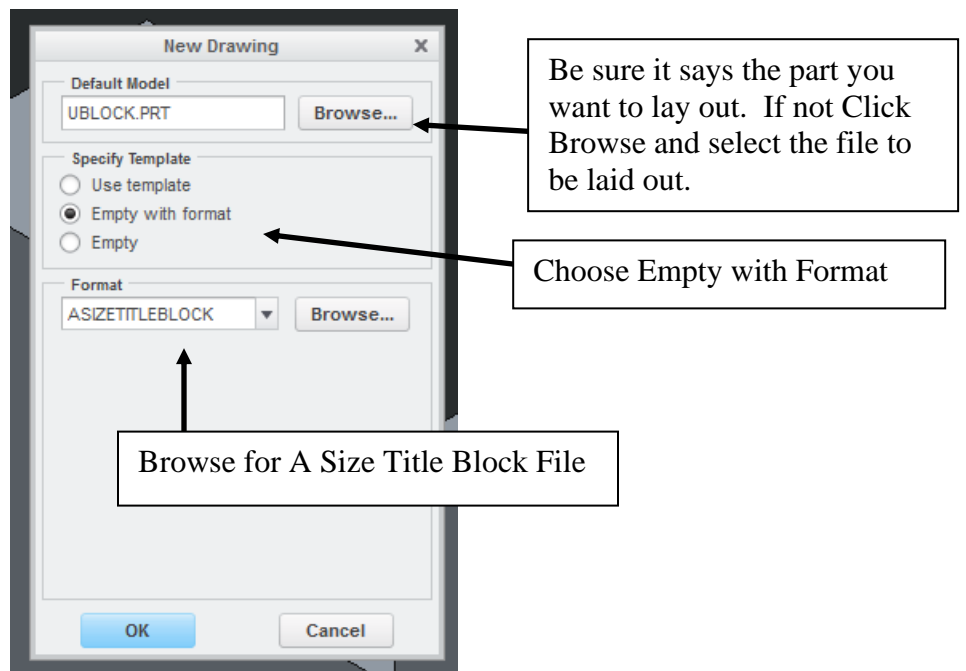
Brighton H.S Engineering

By: Matthew Jourden

1. Open Solid Model Part File to be Laid Out. For Tutorial Open DWG 1 Ublock File > New > Drawing > Name File Same as Solid Model

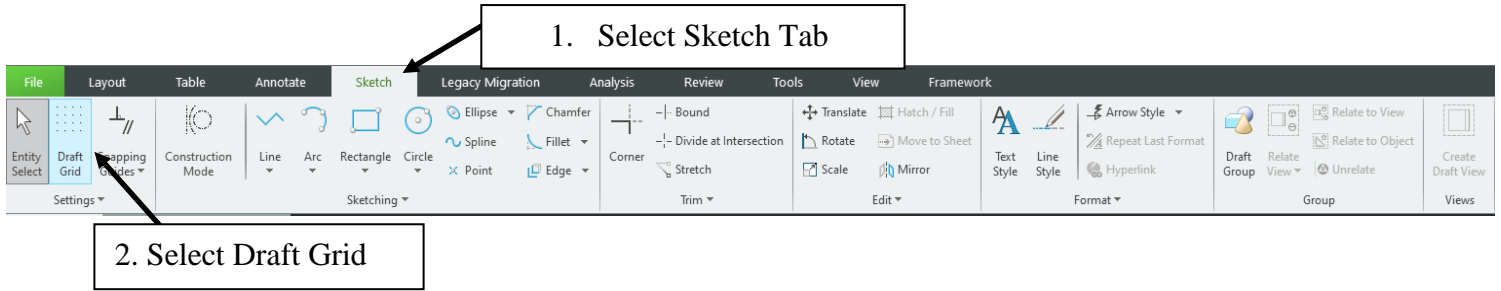


2. Press OK
3. Sheet Set-up

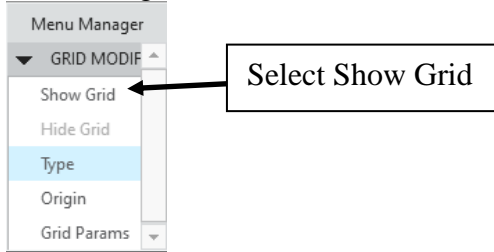


4. **Optional: Turn On Grid**

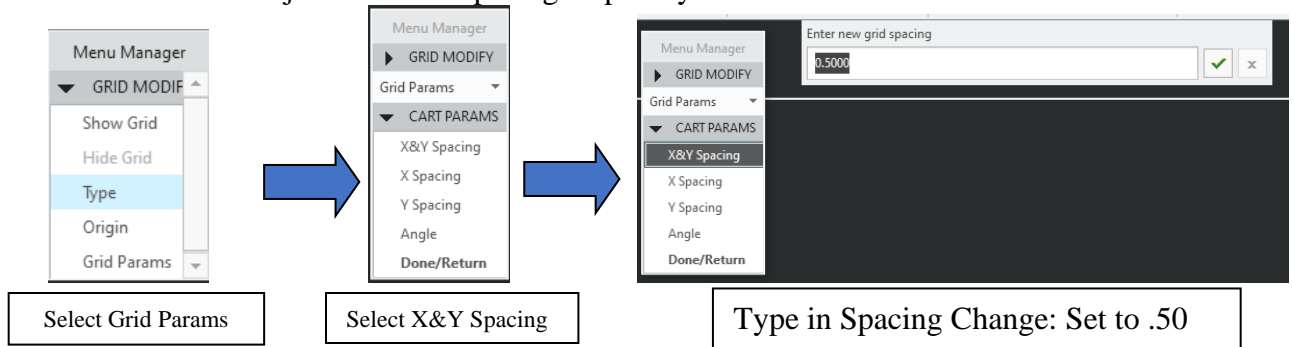
- a. Select Sketch Tab > Select Draft Grid



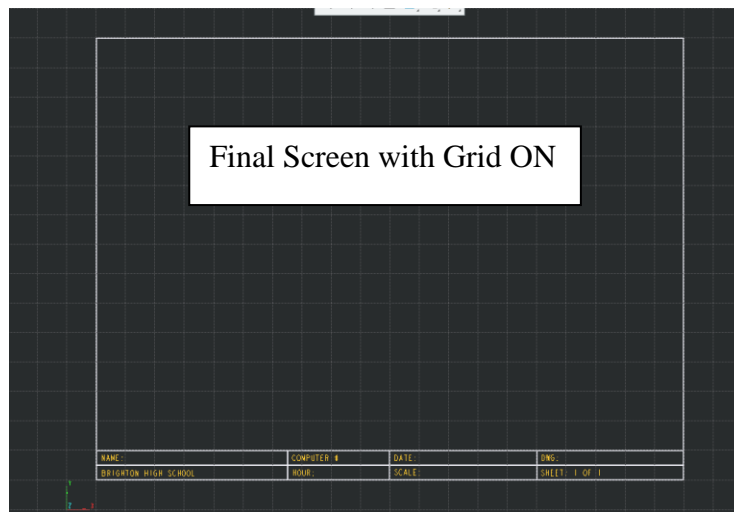
- b. Menu Manger > Select Show Grid



- c. Changing Size: Select Grid Params > Select X & Y > Set Value to .500 > Press Enter  
NOTE: User can adjust X and Y Spacing serperatly.



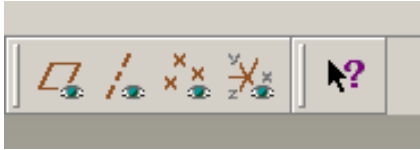
- d. Middle Mous Button to exit the Draft Grid Tool



- e. To turn Grid Off: Select Sketch Tab > Select Draft Grid > Select Hide Grid

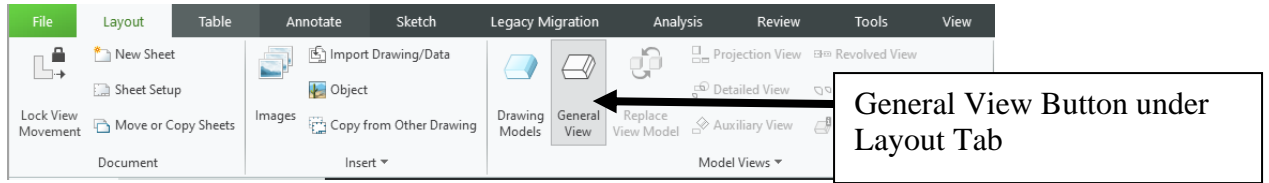
5. Front View Placement

- a. Turn OFF all Datum Tools (Press D; If not turned off before printing the Datums will printout)



b. Placing View(s):

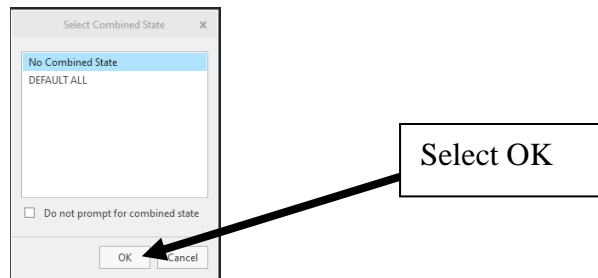
**Option 1: Choose Layout Tab > Select General View**



**Option 2: Hold down the Right Mouse Button in the working area General View**

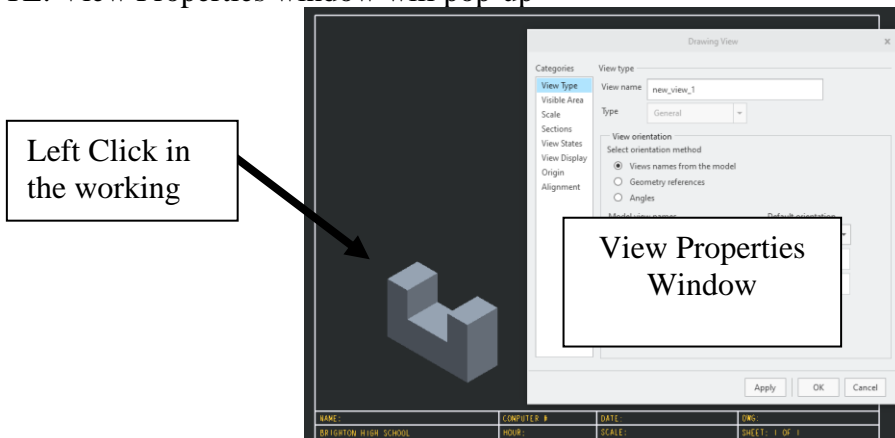


6. Click OK thru the Select Combine States

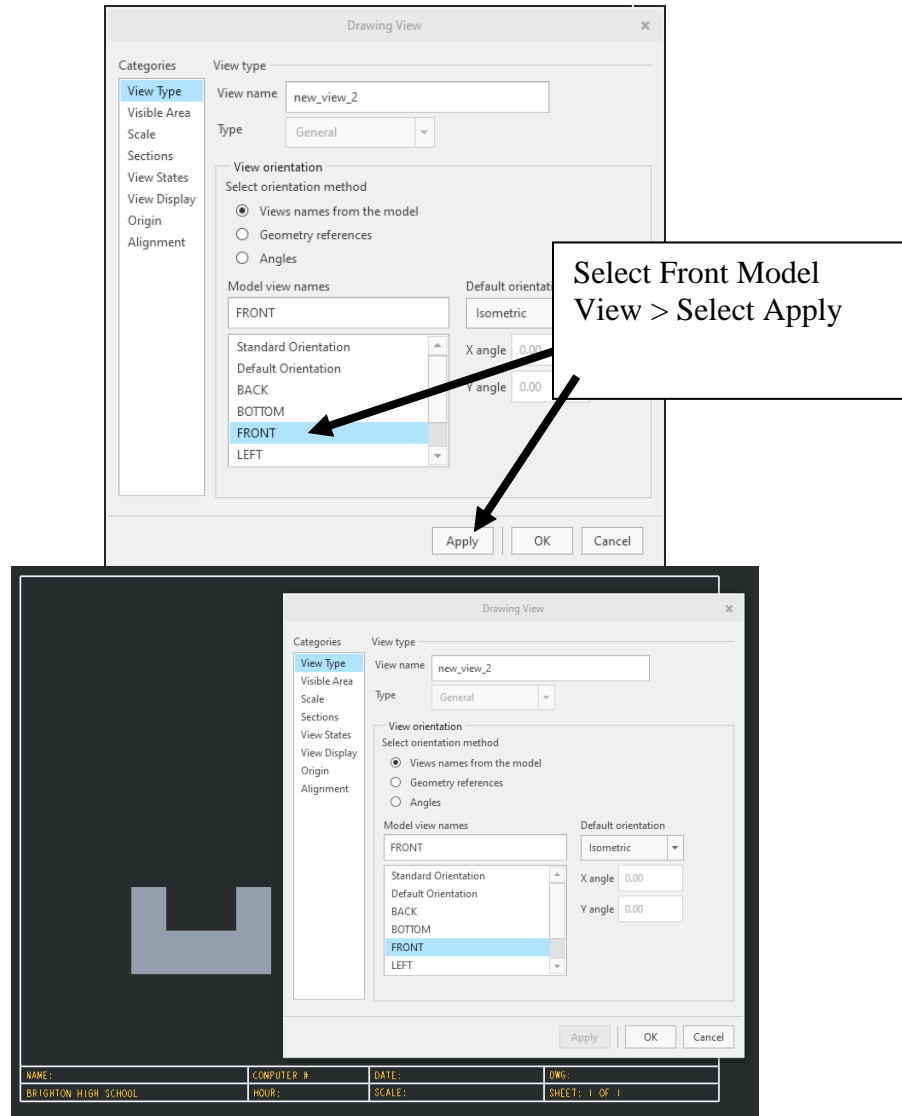


7. Left Click in the working area to place the view

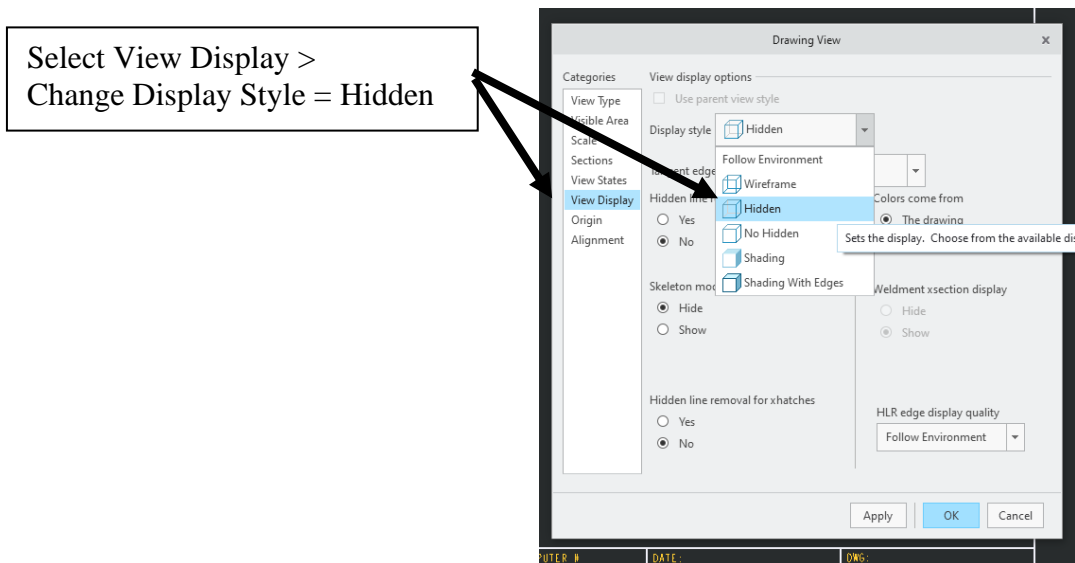
NOTE: View Properties window will pop-up



8. Select **View Type > Model View Names**, Select the **Front View > Select Apply**  
**NOTE:** View will rotate the model to be Normal (Perpendicular) to the Front Datum Plane)

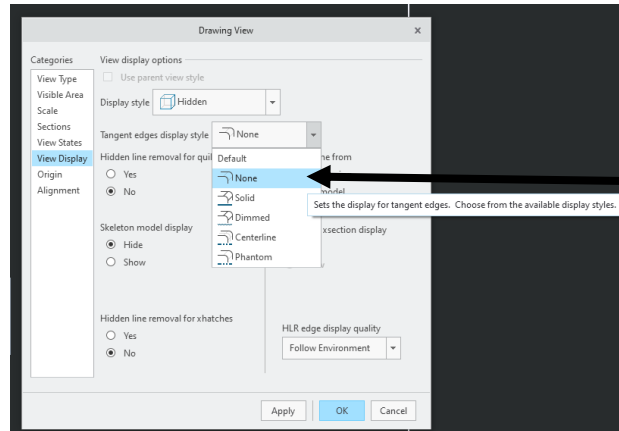


9. Select **View Display > Change Display Style: Hidden (Hidden Lines will appear as light grey lines)**



10. Select View Display Menu > Change Tangent Edges Display Style = None

NOTE: Tangent Edges shows the transition between flat and curved surfaces. For most orthographic views this should be turned off/none

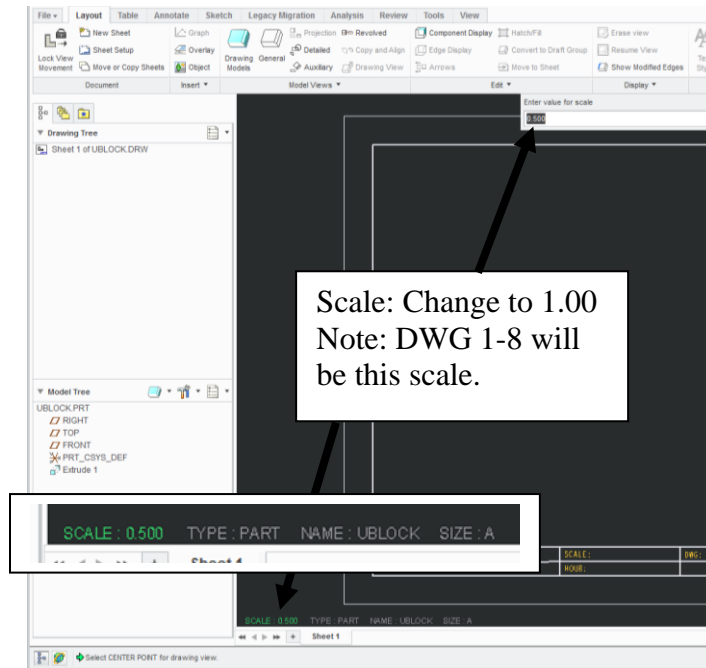


Tangent Edges Display style = NONE

11. Click **Apply** then **Cancel** (This will close the window and save your settings)

12. Scale: To adjust scale for the sheet Double Click on the Scale on the lower part of the screen and Change Value to 1.00 > Enter

NOTE: THIS WILL BE THE SCALE FOR DWG 1-6



Scale: Change to 1.00  
Note: DWG 1-8 will be this scale.

SCALE: 0.500 TYPE: PART NAME: UBLOCK SIZE: A

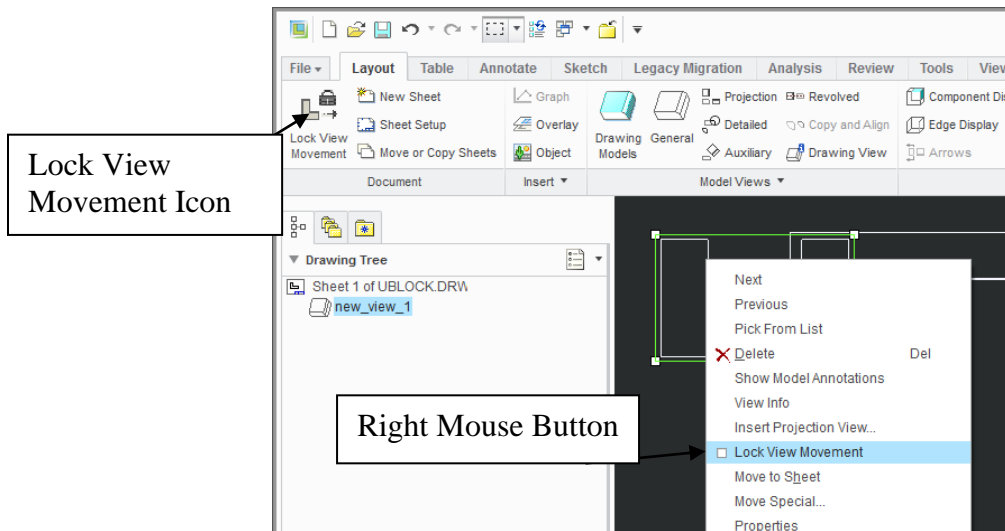
SCALE: 0.500 TYPE: PART NAME: UBLOCK SIZE: A

SCALE: 0.500 TYPE: PART NAME: UBLOCK SIZE: A

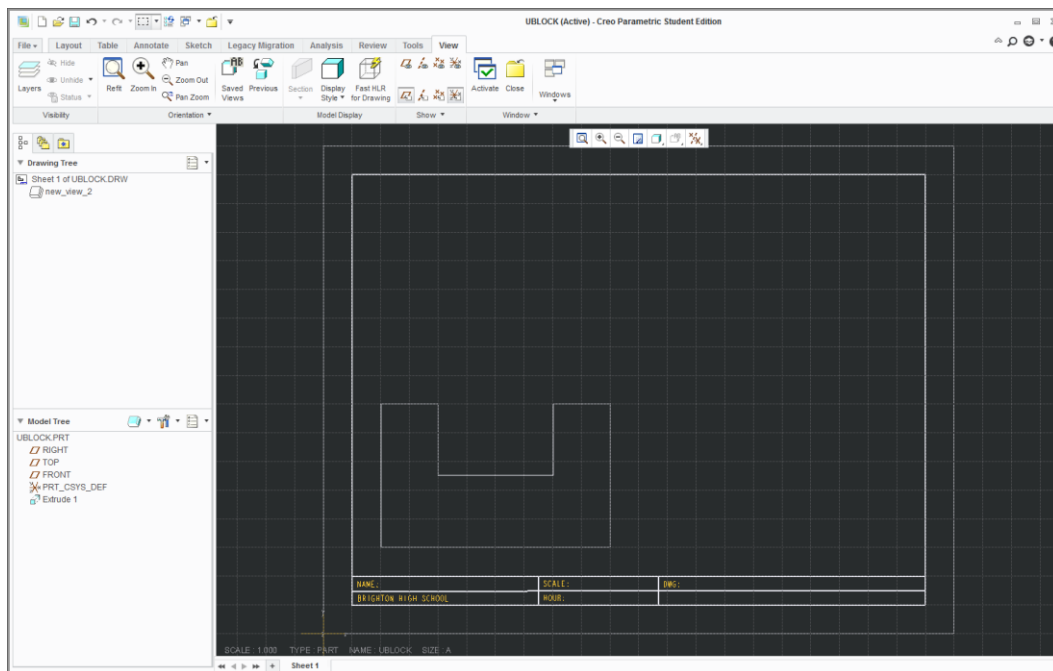
13. First view brought in will be locked. To Move View:

**Option 1:** Select View >hold down **Right Mouse Button** and select **Lock View Movement** (this will uncheck locking feature of the view)

**Option 2:** Select View and Click Lock View Movement in Layout Tab



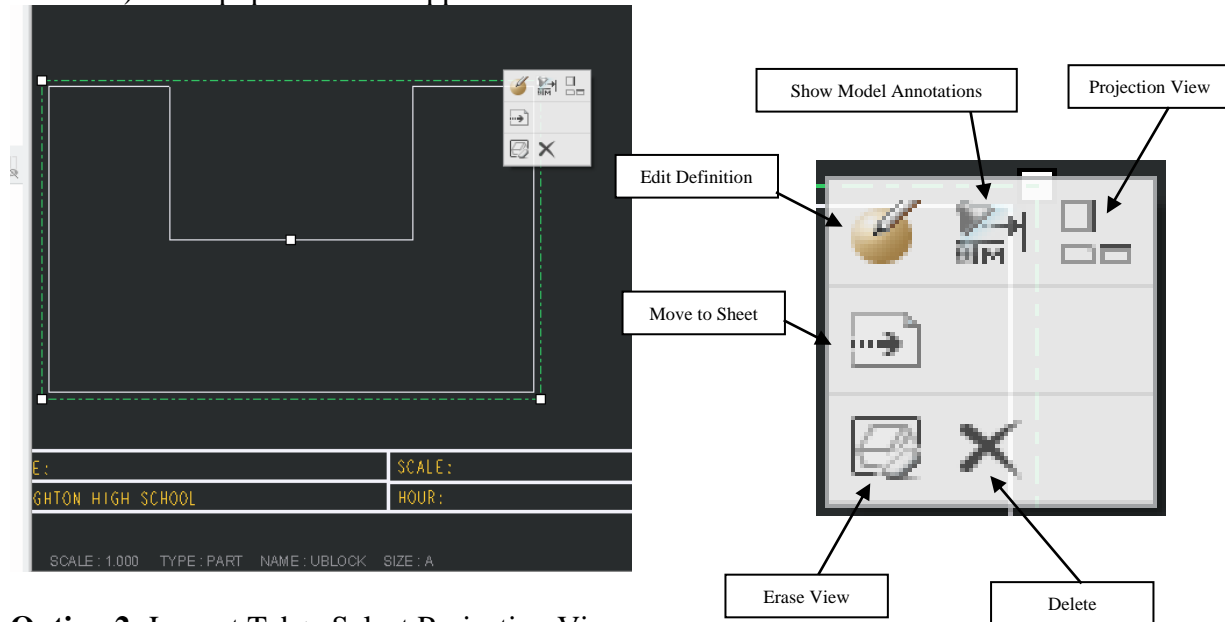
14. To move the move Left Click on the view (view should be outlined in green) > Hold Left Mouse Button on the view down and drag the view. Place the Front View about 1/2" from the border and title block in the bottom left corner of the sheet. May turn Grid on to show (Sketch Tab > Draft Grid > Show Grid > Grid Params > x,y Spacing > .5; Be sure to exit out of menu before trying to move view)



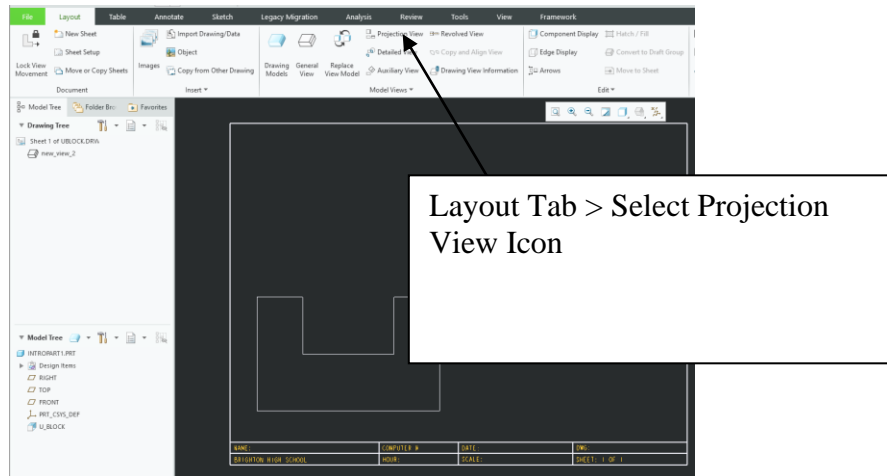
## 15. Placing Right and Top Views

- a. Select Front View (Left Click once)  
NOTE: A Green Box View Box will appear around the View
- b. Project View:

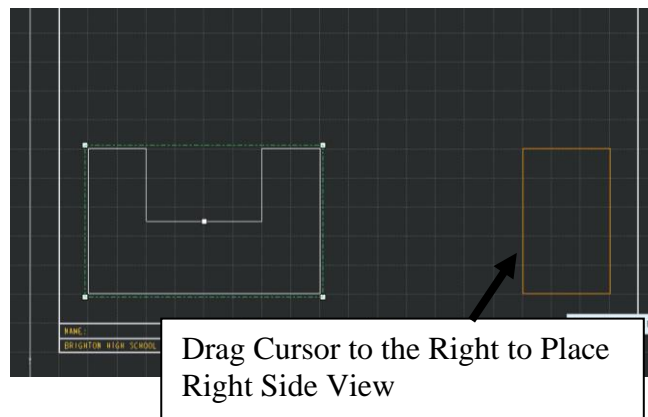
**Option 1:** Select the Front view by Left Clicking on it. (Green box will be around the view to show selection) and a pop menu will appear



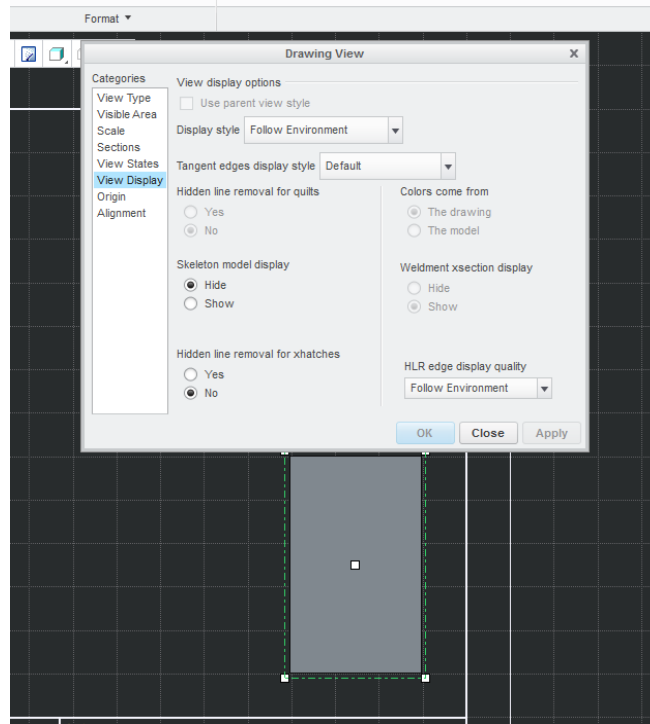
**Option 2:** Layout Tab > Select Projection View



- c. Drag your cursor to the right. A gold box should appear representing the Right Side View > Left Click to place the view. Place about 1/2 inch from border and title block. Note can move view later.



- d. The view will come in Shaded. To change Double Click on the view going into the properties select View Display Tab > Change the following
- i. Display Style > Hidden
  - ii. Show Tangent Edges > None
  - iii. OK



16. Repeat Step 14 a-d for the Top View



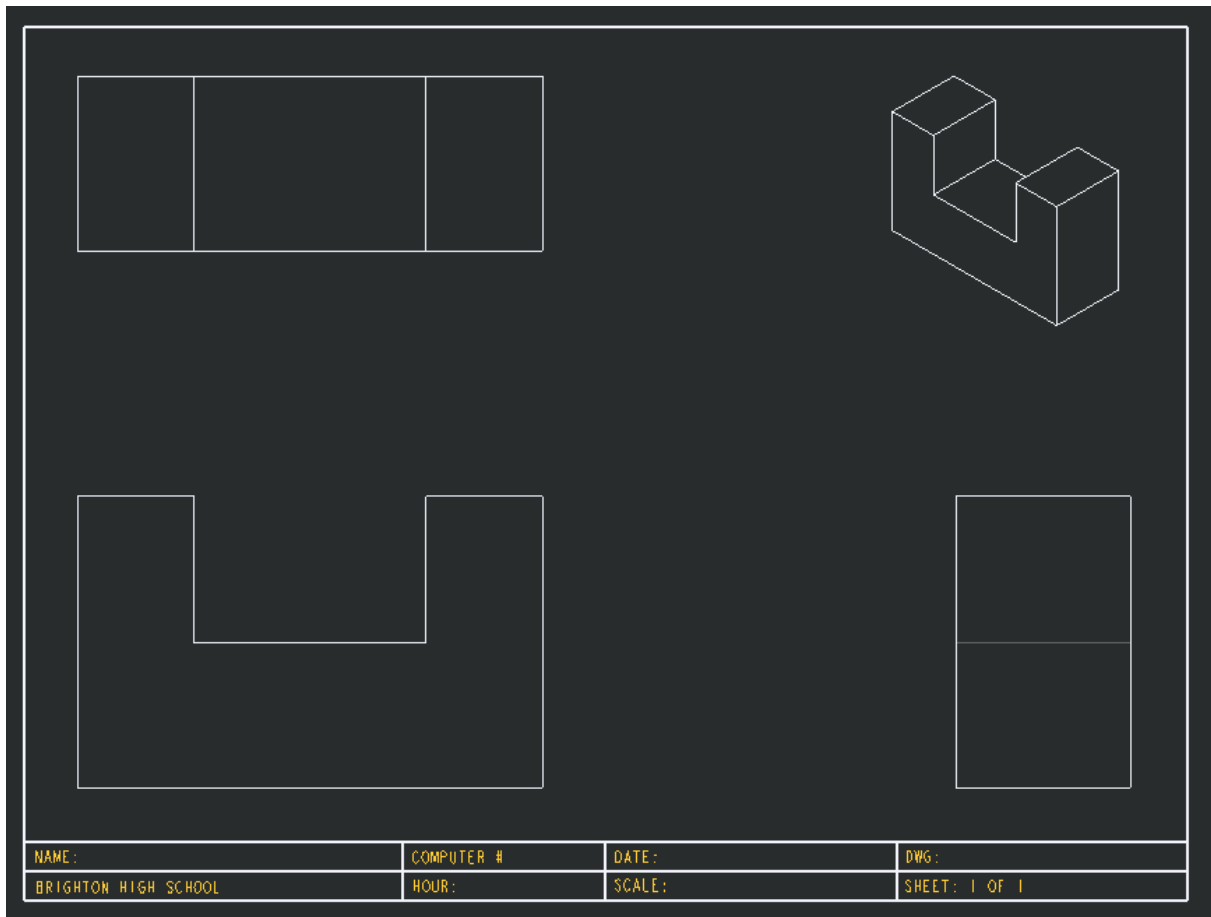
## 17. Placing Isometric

- a. Right Mouse Button without anything selected > Select To **Insert a General View**  
**or**  
Click **Layout** Tab > Select **General View** Icon >

(for Both options) Left Mouse to place. Isometric goes in top-right corner of the page.

- b. Go in to the properties of the view by double clicking > change the following
  - i. Scale > Click Custom Scale > Set to smaller value; Start at .5 and adjusts up or down from there. NOTE: Scale for Isometric does not need to be the same as the 3 Views.
  - ii. View Display > Display Style > No Hidden
  - iii. View Display > Tangent Edges > Default
  - iv. Ok
- c. Be sure to select the scale below the view (writing in yellow) and delete it.

**Finished Drawing should look like this. (Note I turned off the Grid)**



**Save the drawing and Repeat the steps for DWG 2, 3, and 4 before moving on to Dimensioning**

**NOTE: MAKE SCALE FOR DWG 1-8 FULL SCALE (1.000 = 1.000).  
ISOMETRIC MAYBE A DIFFERENT SCALE**