

Tutorial: Inserting Photos into Creo Layout Drawing

By: Matthew Jourden

Brighton High School

Brighton, MI

Creo can use various file types within the Engineering Drawing for example

Graphic Files: png, jpeg, gif, or tiff

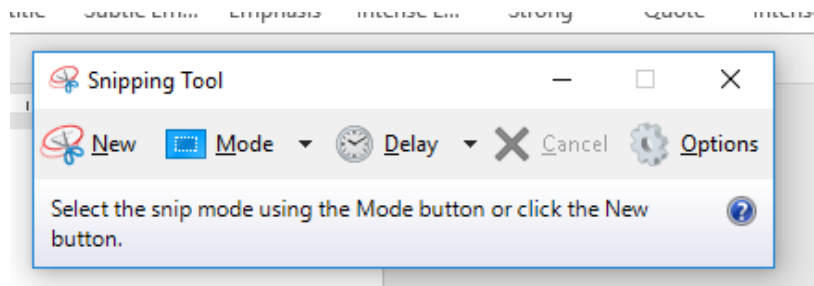
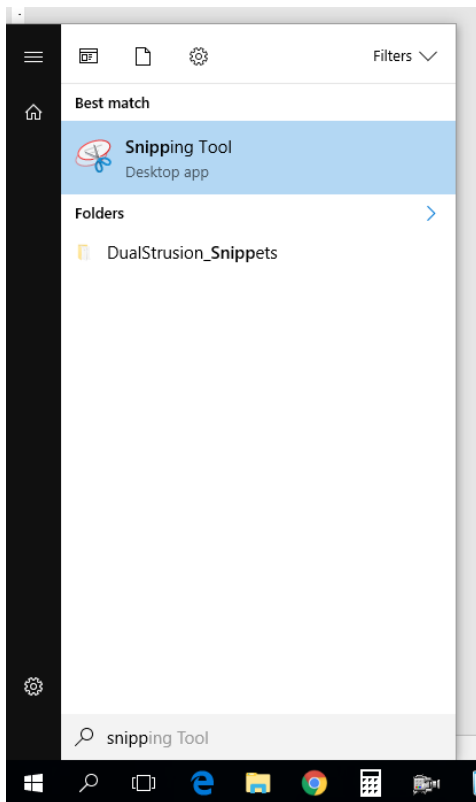
Microsoft Office: Word, Excel, Powerpoint

PDF Files

And More!

Steps to Screen Shot Parts of Active Programs on the Monitor Screen

1. Go to the Start Menu and type in Snipping Tool (This tool will allow the user to highlight certain areas of the screen or documents and convert it into a jpeg image).

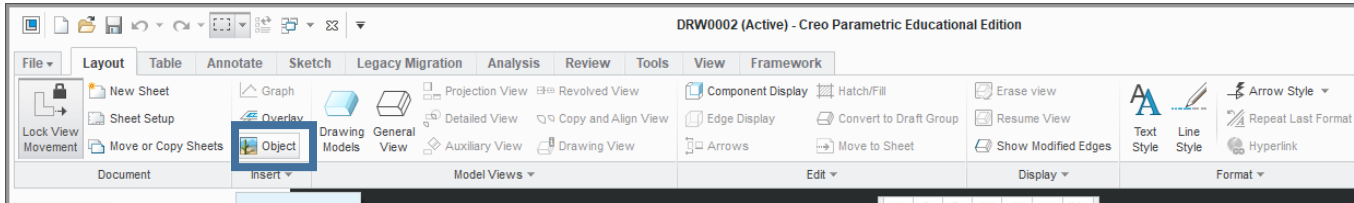


Pop Up Program will appear on the screen

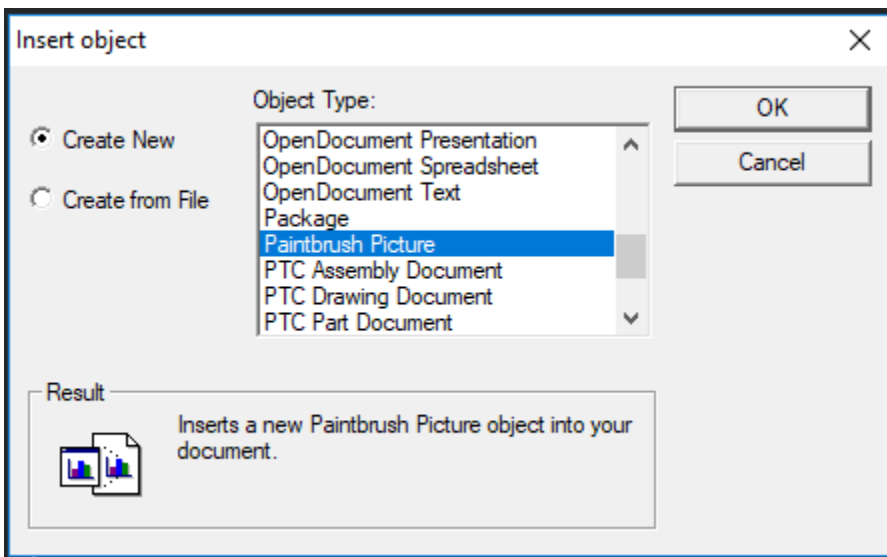
2. Open the Document, Webpage, or image that is desired to be copied > Select New in the Snipping Tool Program (NOTE: Screen will go grey until the next step) > Draw a rectangular box around the area desired to be captured by holding the left mouse button down until desired box is met and release left mouse button > a pop menu will appear showing the cut out image
3. Save this image in desired location

Importing jpeg Image into Creo

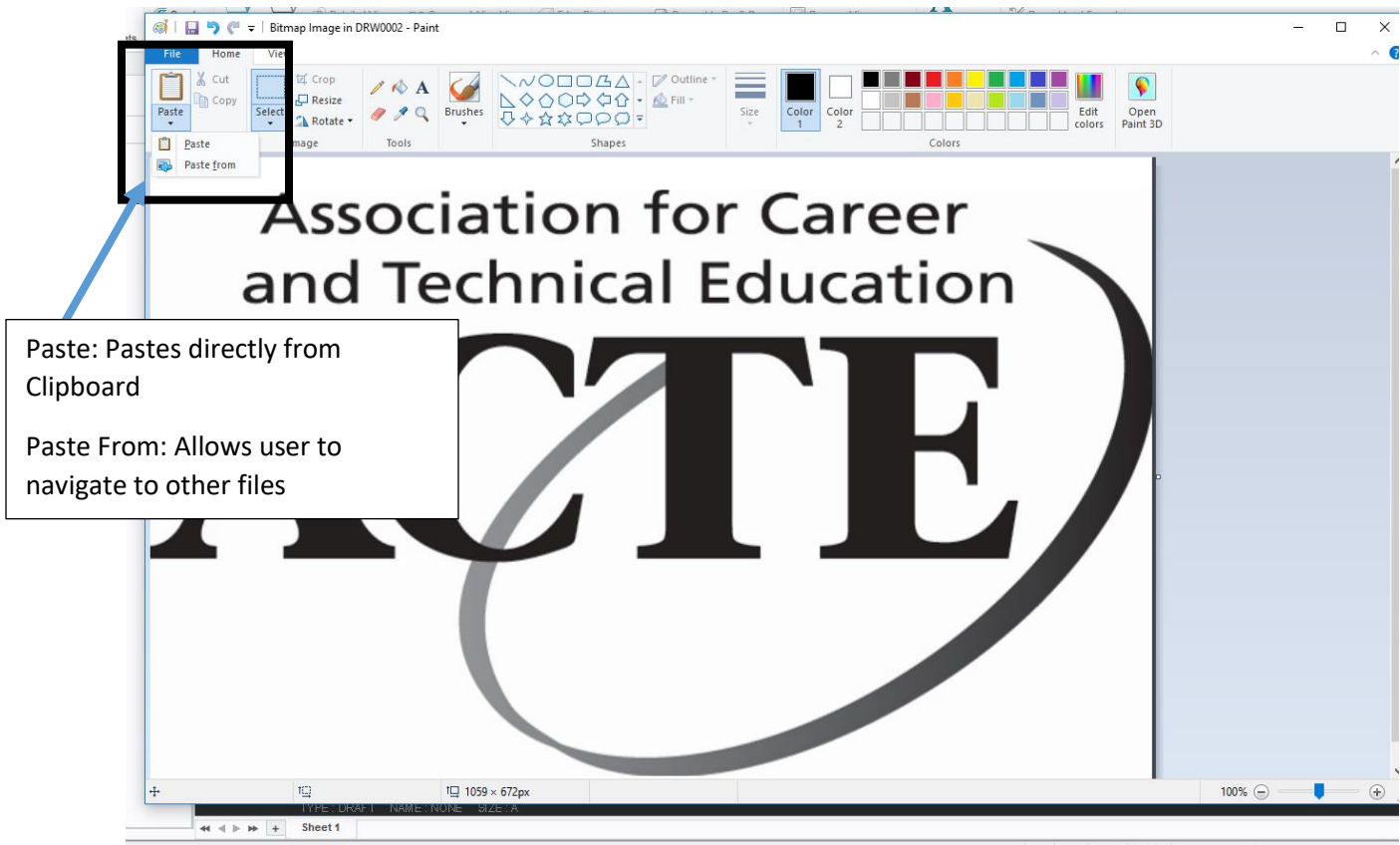
1. Open Creo > Start a new Creo Drawing or Opening an existing file > Model Tab > Object (located in the Insert Menu)



2. Select Desired File Type. For this Tutorial the import file is a jpeg so select Paintbrush Picture > Click OK > Paintbrush will open



3. Because the Snipping Tool was used the image is saved on the clipboard > Click Paste image (NOTE: If image was not snipped then the down arrow below paste gives the option to Paste From, which allows the user to navigate to a specific image file). Paintbrush allows the user to modify the picture as desired (I.E Scale, Orientation, Colors, Add images/text, etc.)



4. Once image is set to desired size, color, location, etc. > Close Paintbrush
5. Once Paintbrush is closed > Go back to Creo and Regenerate the screen (Ctrl-G) > Image should appear.
(NOTE: Image can still be resized within Creo.)
Creo also connects the file to the original, so if the original file is changed it will be updated in Creo.

