

Creo Layout: Rotating Views

By: Matthew Jourden

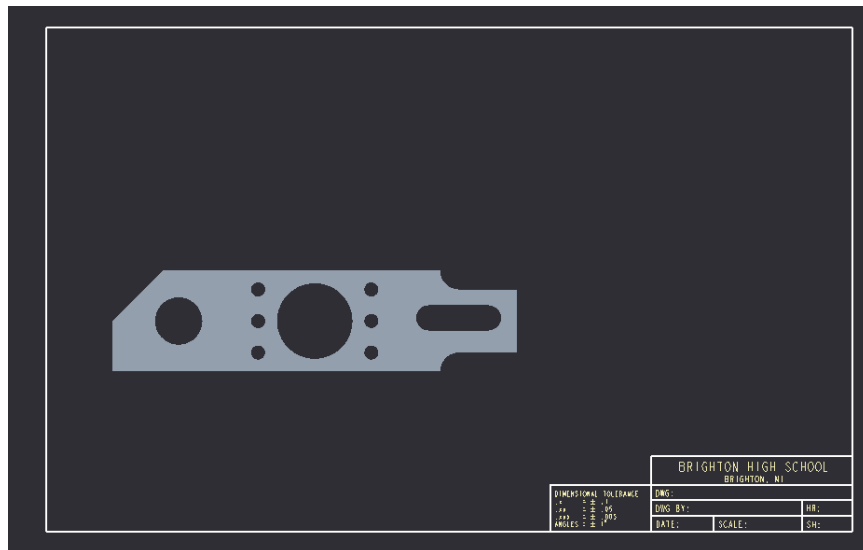
Brighton High School

Brighton, MI

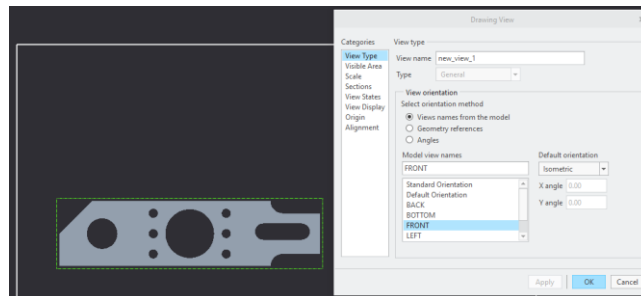
When laying out views the software may not give the user the desired view. This tutorial will show how to rotate a view to get the desired result.

Option 1: View Properties

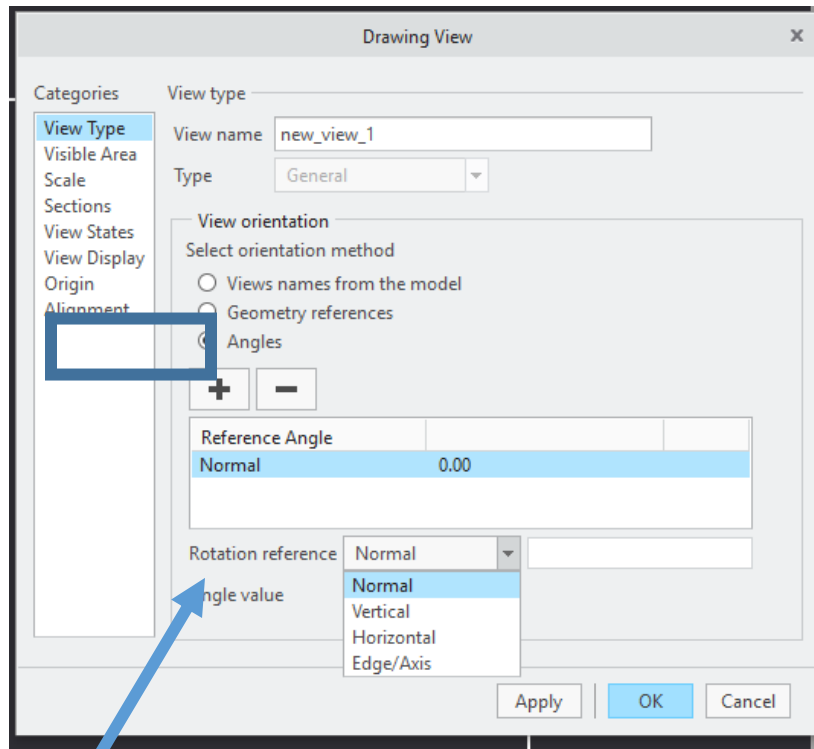
Scenario: The following view needs to be rotated 90 Degrees to fit on the board and title block



1. Go into the Properties of the view



2. Select Angles Option in the View Type Menu



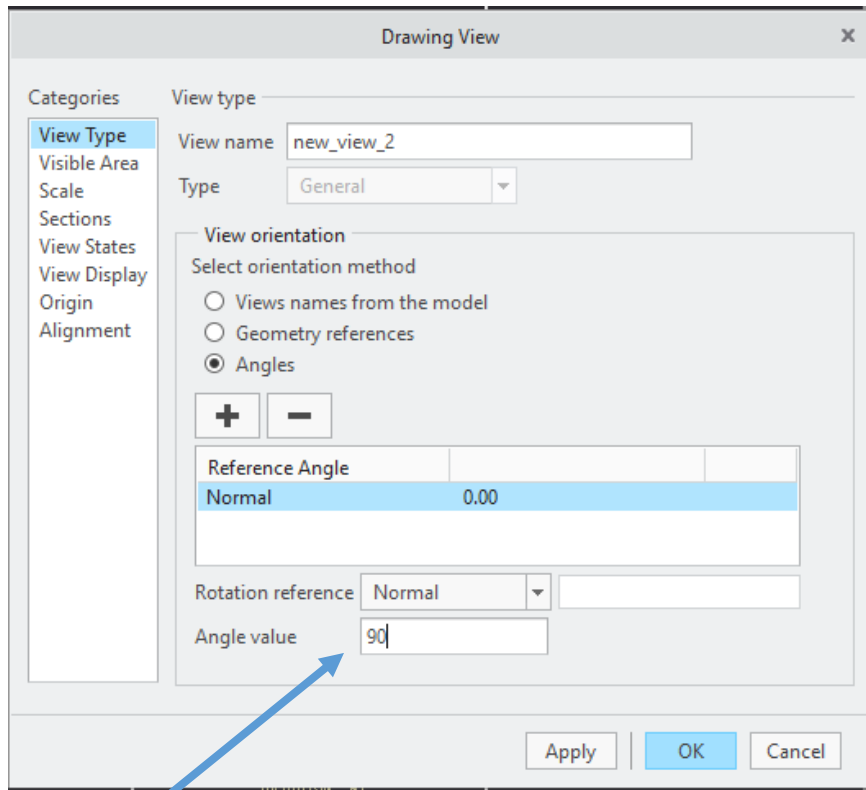
Normal: Rotates the part perpendicular to the viewer.

Vertical: Rotates the part based on a vertical line. I.E
Front View can become the Right Side View

Horizontal: Rotates the part based on a horizontal. I.E
Front View becomes a Top View

Edge/Axis: Rotates the part based on a selected Edge
or Axis Line

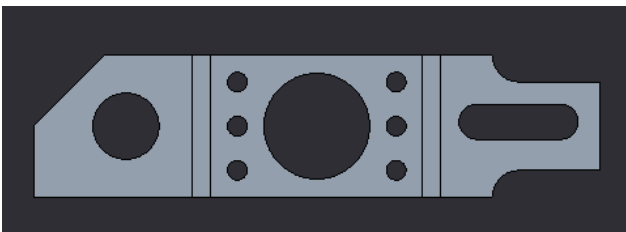
Normal Rotation



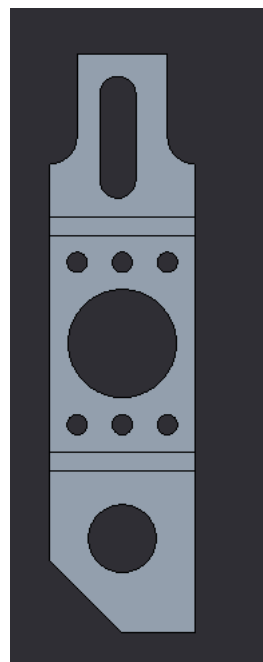
This will rotate your part in a clockwise manner.

Note: Once a value is entered the Angle Value will return to 0, since this is the default state.

Before



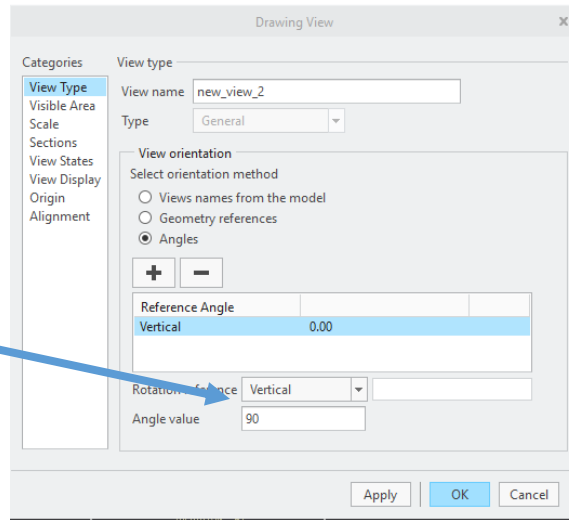
After



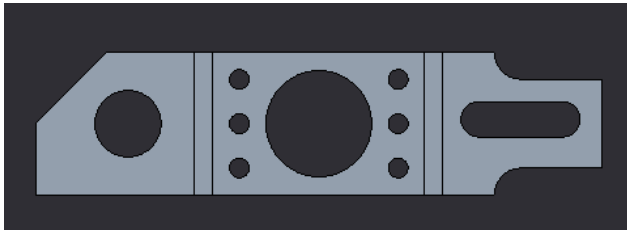
Vertical Rotation

This will rotate your along a vertical line. i.e Front View becomes Right Side View

Note: Once a value is entered the Angle Value will return to 0, since this is the default state.



Before



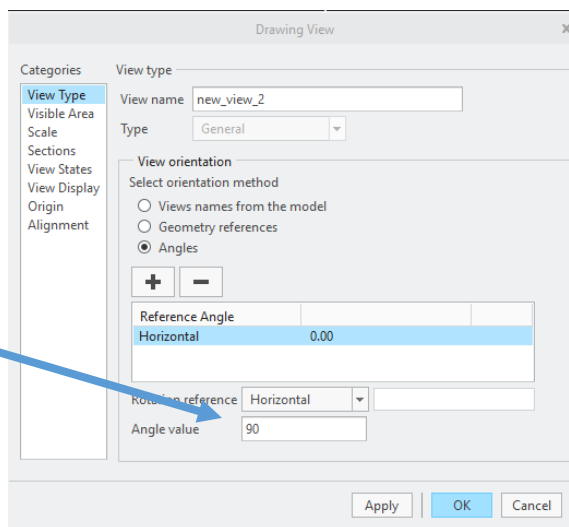
After



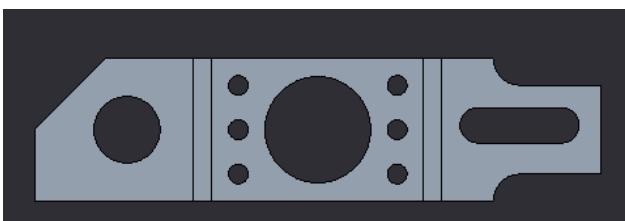
Horizontal Rotation

This will rotate your along a Horizontal line. i.e Front View becomes Top Side View

Note: Once a value is entered the Angle Value will return to 0, since this is the default state.



Before

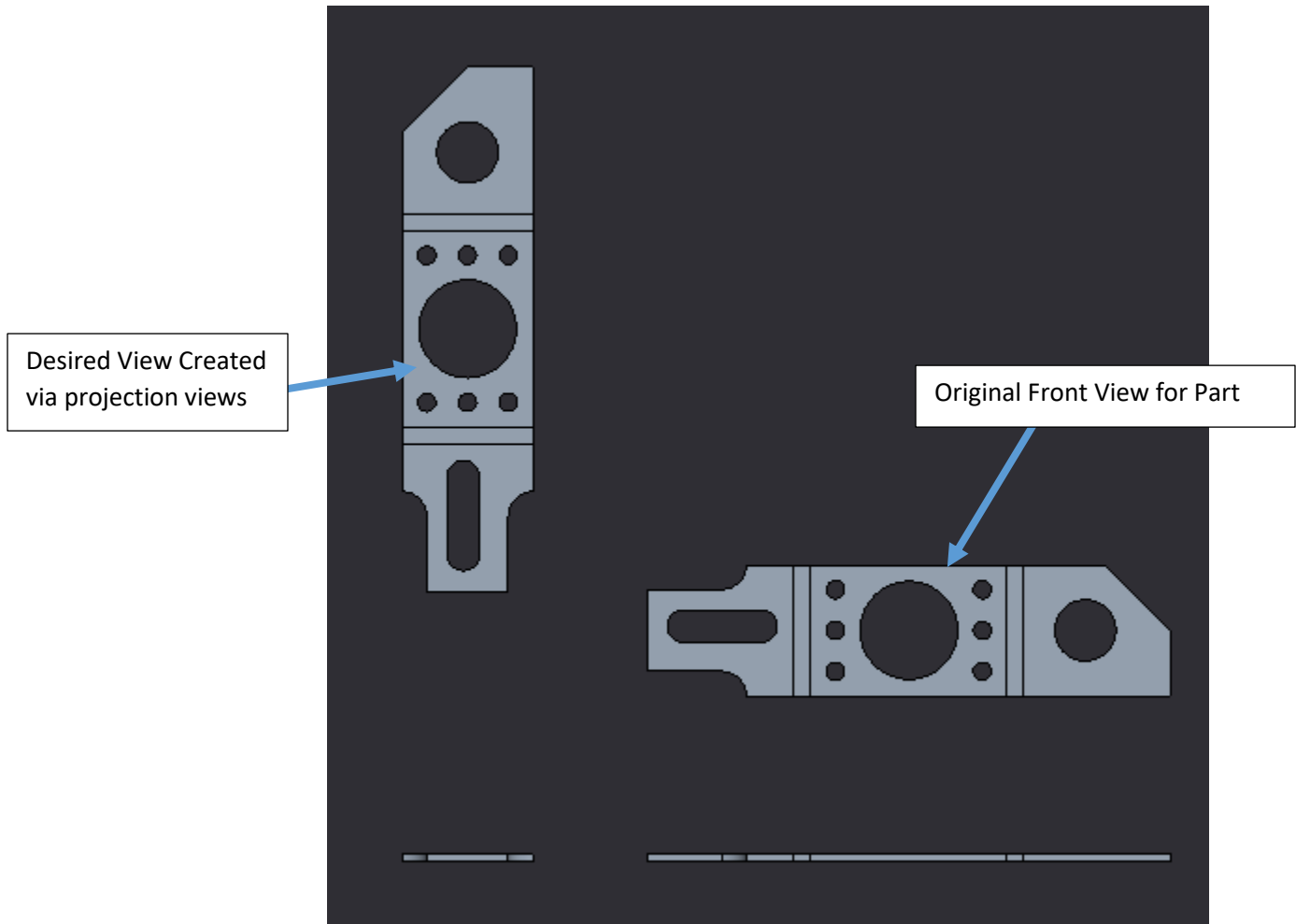


After

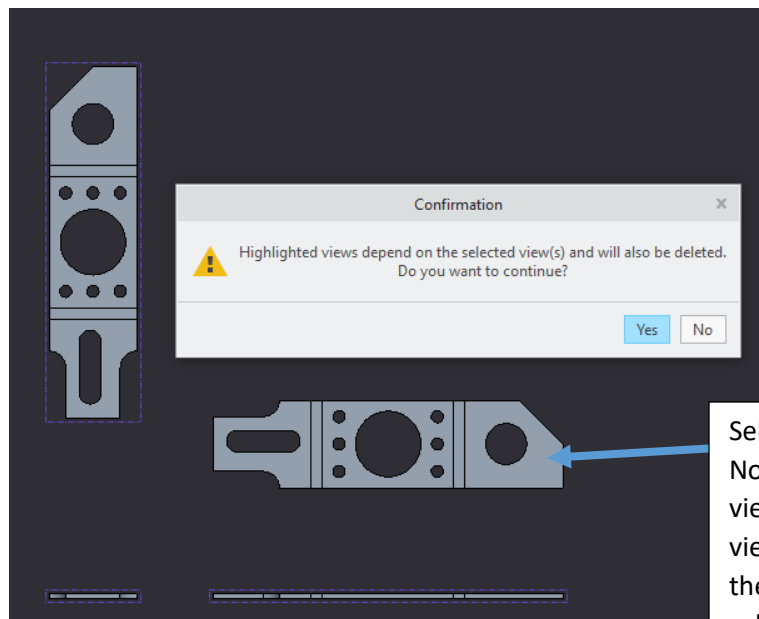


Option 2: Project View Converted to General View

1. Place view > Project Views until desired view is reached

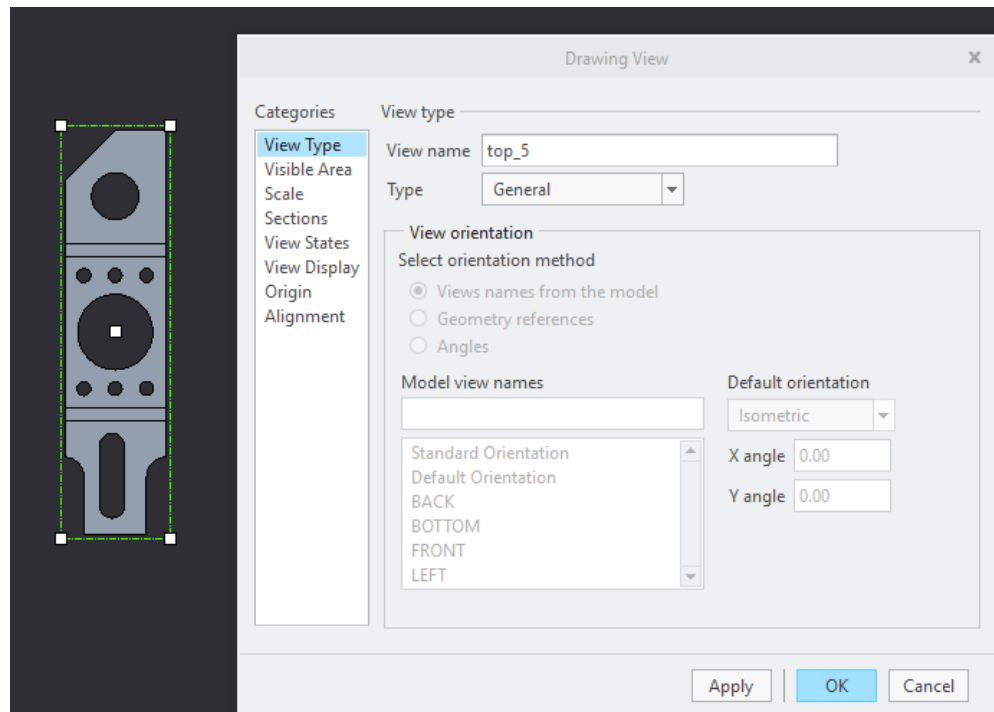


NOTE: If any view is deleted then all other views projected from it will also be deleted because the views are referenced from each other.



Selected View to be deleted. Notice the other views have a view outline around them. These views will also be deleted since they are projections of the selected view to be deleted

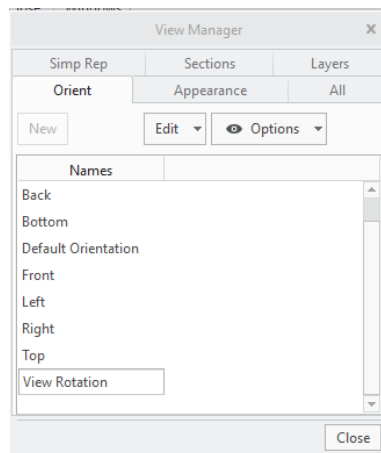
2. Select the view to keep > Go into the View Properties (Double Click on the View) > Select View Type > Type > Change from Project to General > Select Apply > Select Ok



3. Now delete the other views. The View changed to General will remain, since the connection between the pervious view and the kept view has been broken

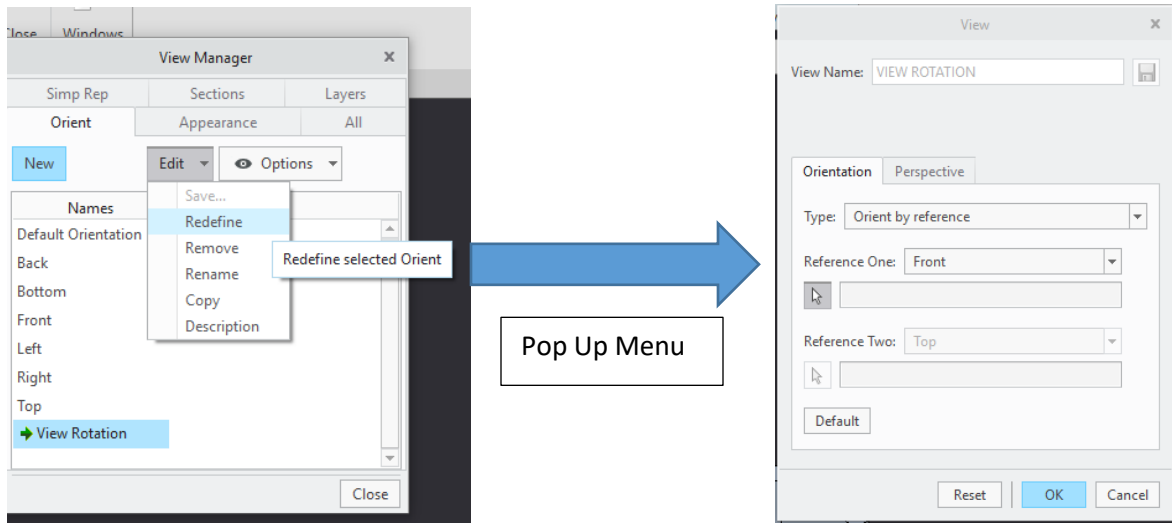
Option 3: Solid Model View Manager Orient Tab

1. Go back to the Solid Model of the part > Select View Tab > Select Manage View Icon > Select Orient Tab > Select New > Name the View (i.e View Rotation) > Press Enter Key.

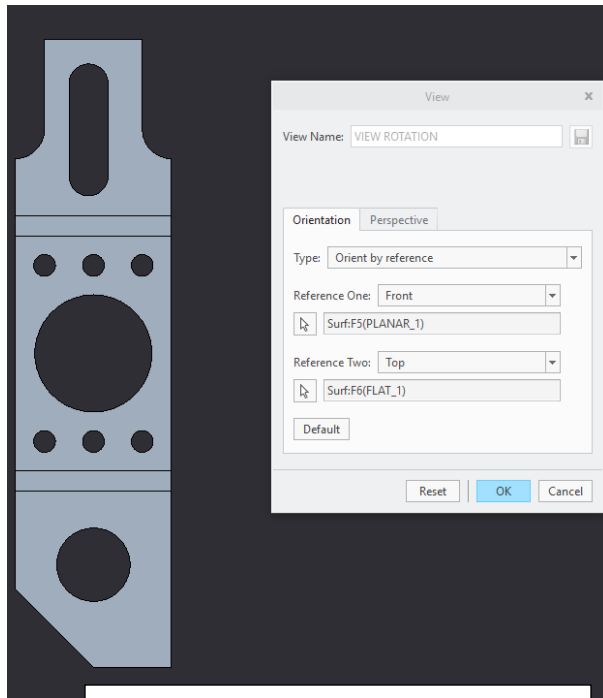
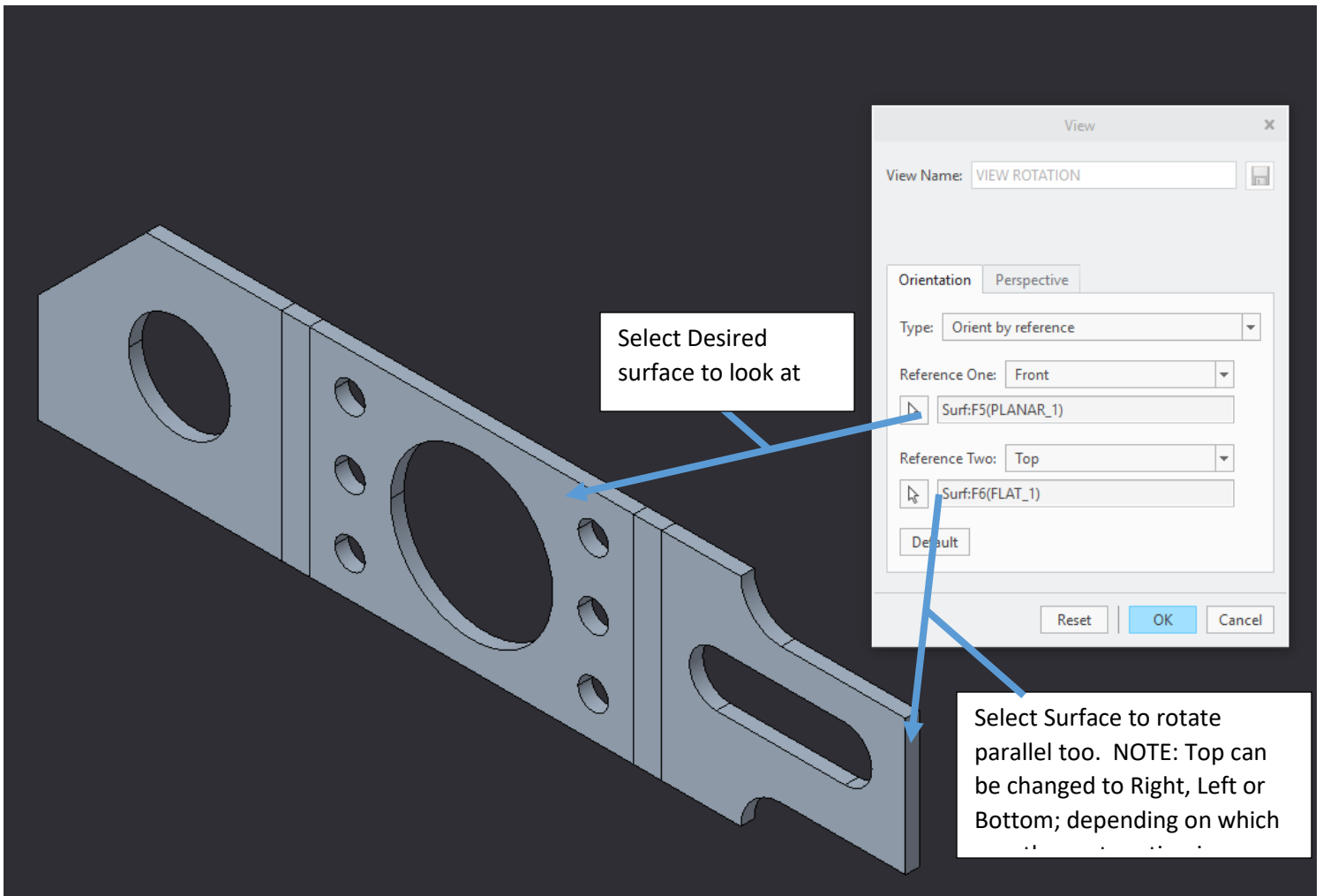


A snapshot of your parts current orientation is recorded

2. Select Edit Button > Select Redefine



3. Selections are based on selected surfaces and relating those to a specific Datum (Front, Top, Right)



Final Result

4. Go to Layout (Border and Title Block Drawing) Place a General View > View Rotation (Created View) will be an option as a saved view

