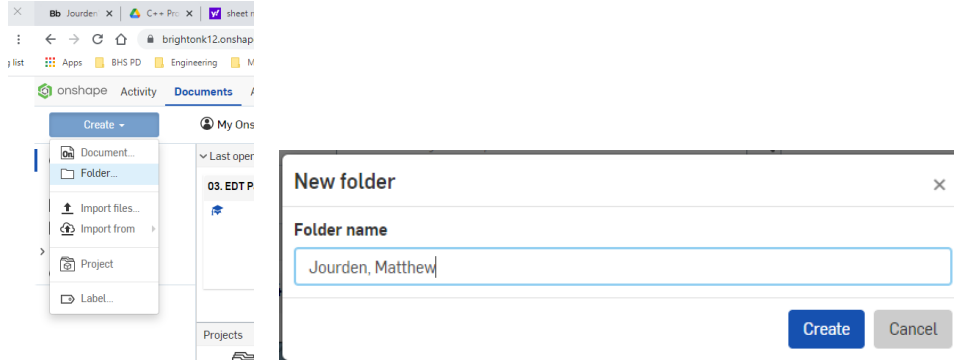
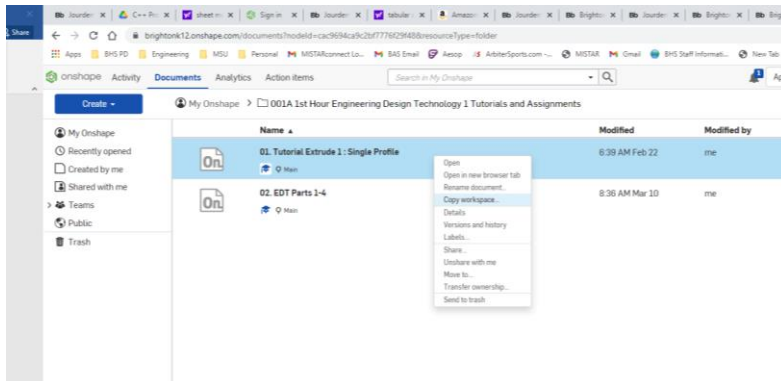


# OnShape Setup and File Copy

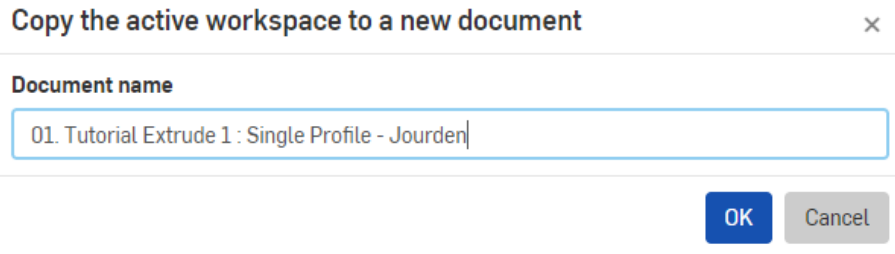
1. Login into brightonk12.onshape.com
2. Select Create (Top Left Corner) > Select Folder > Name Folder Last + First Name > Select Create



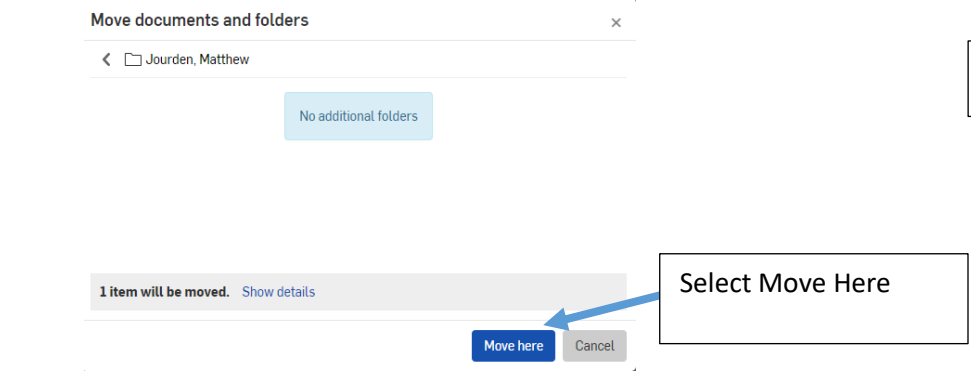
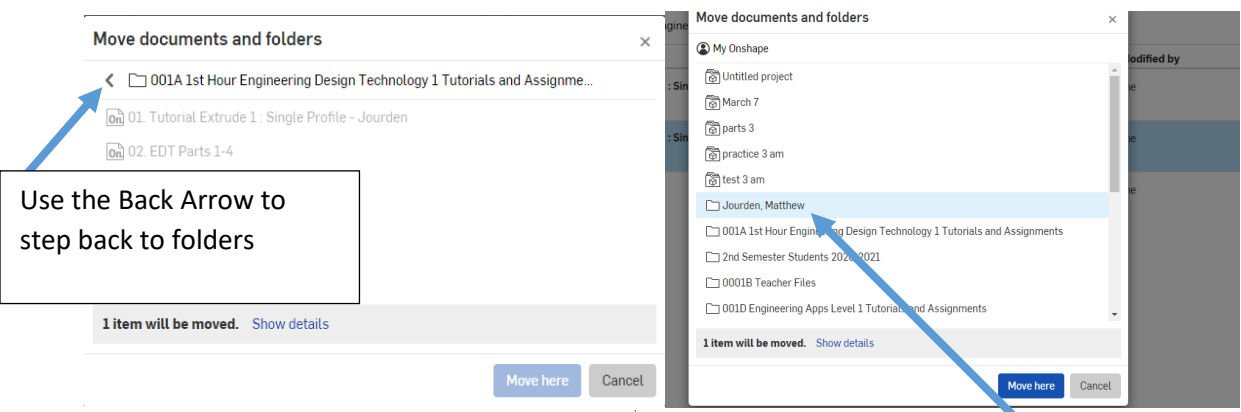
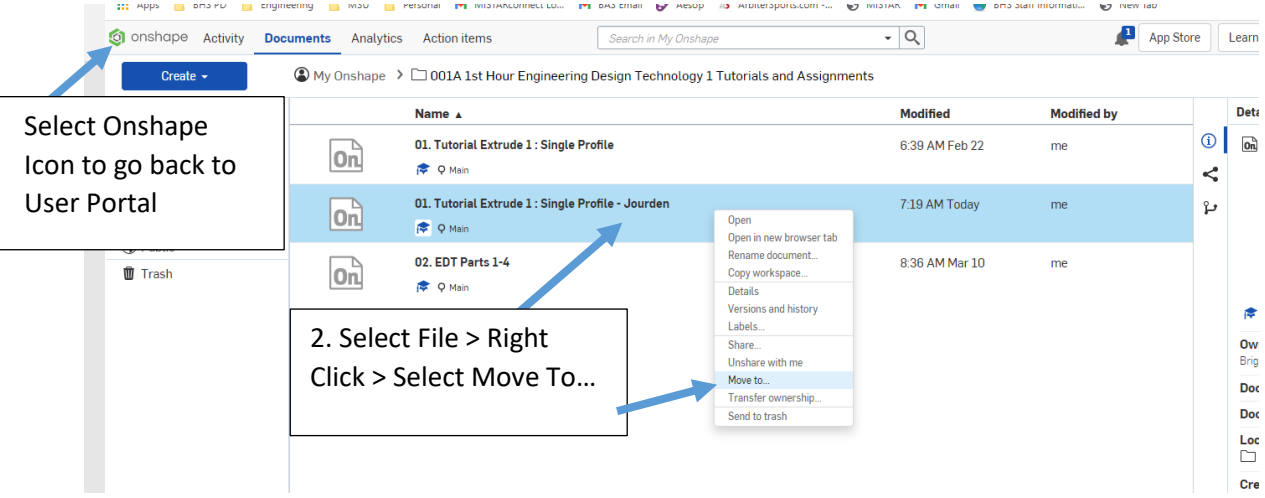
3. Copy Files
  - a. Select 001A 1<sup>st</sup> Hour Engineering Design Technology 1 Tutorials and Assignments Folder > Select (Left Click) 01. Tutorial 1: single Profile > Select Copy Wokspace



- b. Rename File to 01. Tutorial Extrude: Single Profile – “Your Last Name” > Select Ok > File Will Open



- c. Select Onshape Icon Top Left Corner to Go back to User Portal > Select 01. Tutorial Extrude: Single Profile – “Your Last Name” > Right Click > Select Move To... > Navigate to Student Folder > Select Folder to Place



NOTE: if the file is not located in the Class Folder: Click on MyOnshape Icon (Top Left Corner) > At the bottom of the user portal Documents are shown > Your Document will be here > Select Document > Right Click > Select Move To... > Select Folder with your Name.

## Repeat Process for 02. EDT Parts 1-4