

Typography: Warp, Effects, Create Outlines, Multiple strokes, text on a path, make with top object

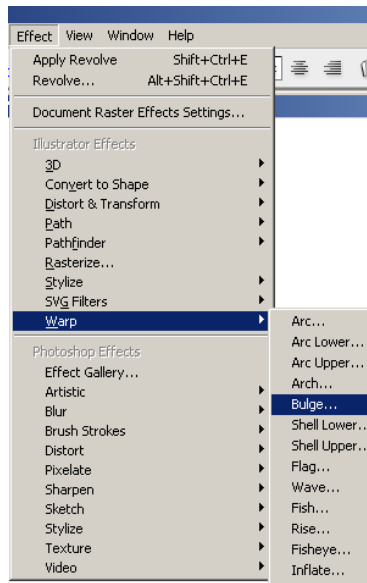
Add Warp to Text

Effect – menu

Warp – option

Click preview button

Choose option



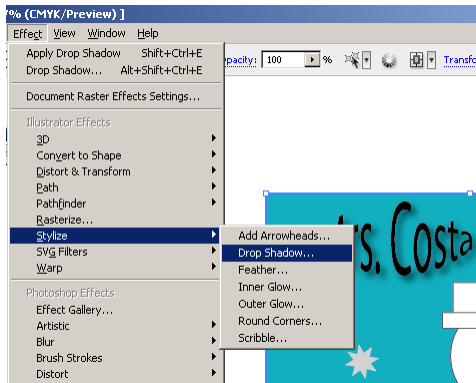
Warp Text

Add Effects to Text

Effect – menu

Stylize – option

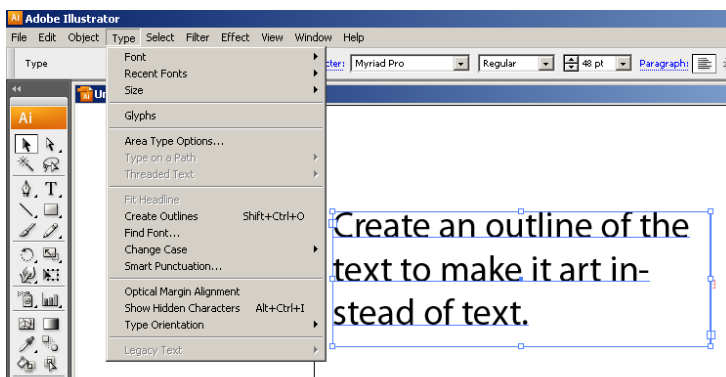
Drop Shadow (and others)



Example of Drop shadow

Create Outlines

To create outlines of text. 1. Create text. 2. Click on the black arrow. 3. Choose Type menu. Create outlines. The text is now converted to art.



This is what your text will look like after it has been converted to outlines. Now each letter/character is its own piece.

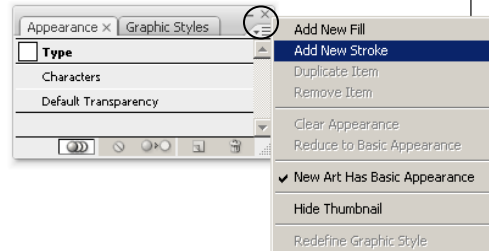
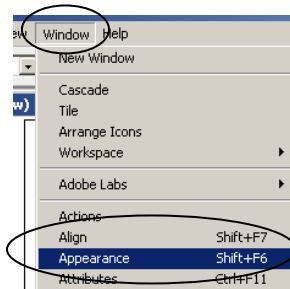
Create an outline of the text to make it art instead of text.

Create an outline of the text to make it art instead of text.

Now you can adjust the “objects” however you want. These “objects” are no longer text.

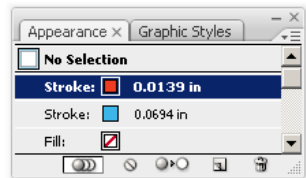
Create Outlines

Multiple Strokes



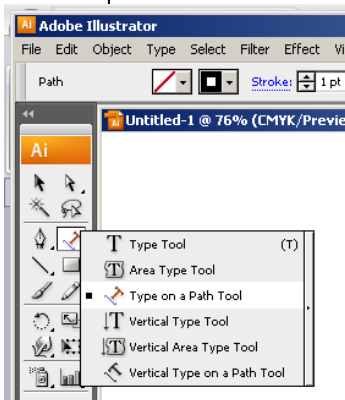
WINDOW menu, APPEARANCE palette, 3 lines, add new stroke

Creating Multiple Strokes



The stroke on the bottom(blue) must be a LARGER point size. The stroke on the top (red) must be a SMALLER point size.

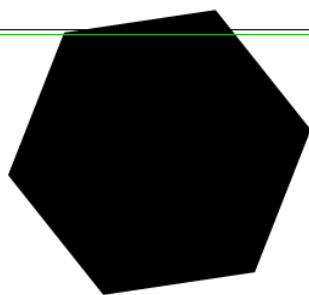
Text On a Path



Text on a path 1. Draw path first 2. choose the type on path tool 3. click on path and type

Make with top object

This is my text
to use



1. Type some text in a text box. This needs to be arranged to the back and create some kind of shape. The shape needs to be in front of text.
2. Now select BOTH text and object.
3. Choose - **Object - Envelope Distort - Make with top object**

