

# Stationary Layout Information

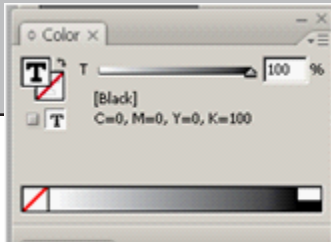
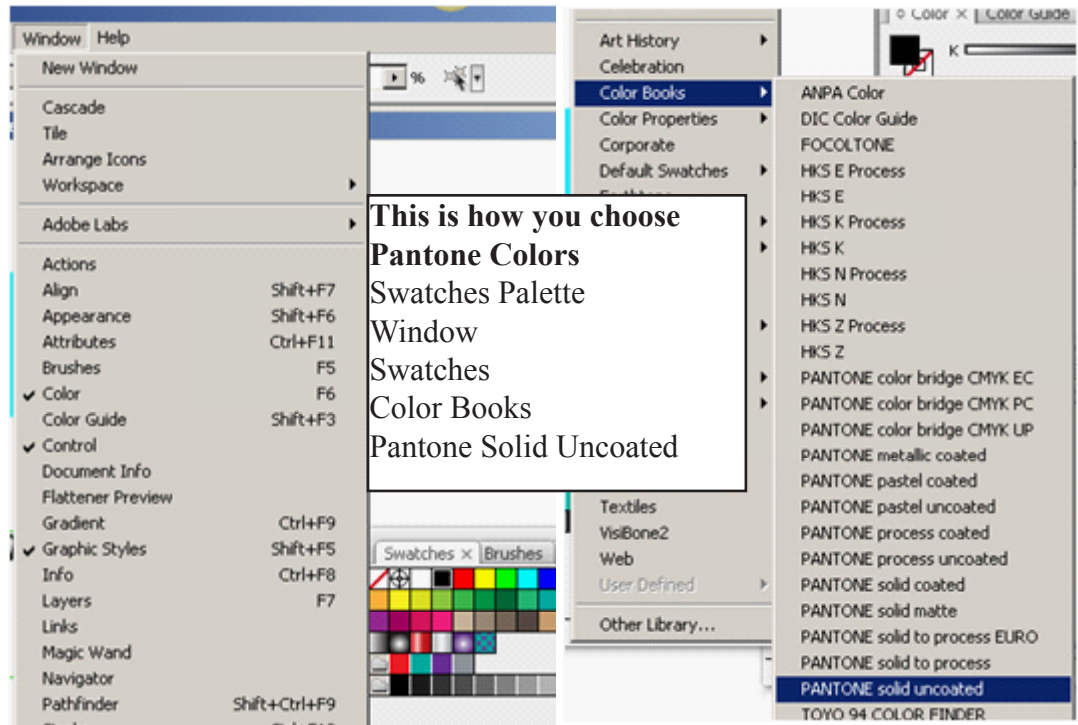
## STEP 1 - Illustrator

ONE SIDE  
Width = 4.1875  
Height = 5.375

This is the space you have to work with. Create your artwork in Illustrator.

We are using Pantone Solid Uncoated colors to print in class (see screen shot to the right)

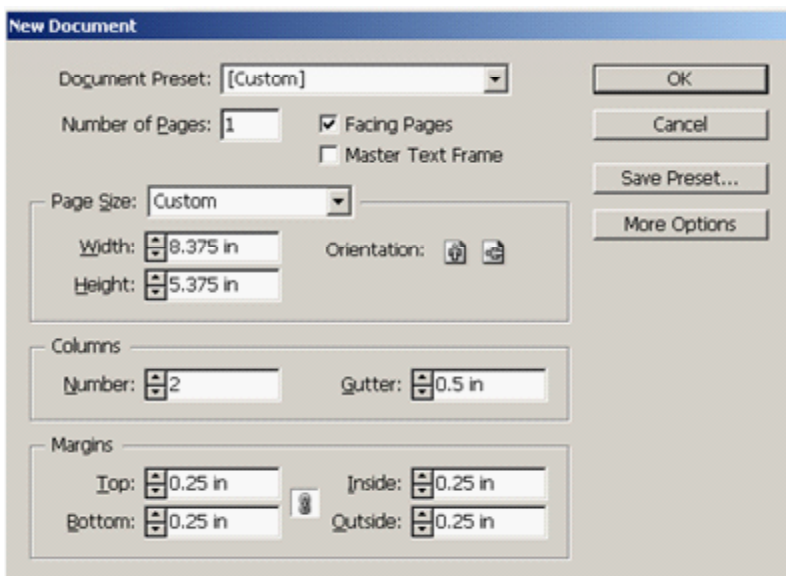
You are using ONE color BUT use BLACK to create your artwork and use tints



## STEP 2 - InDesign

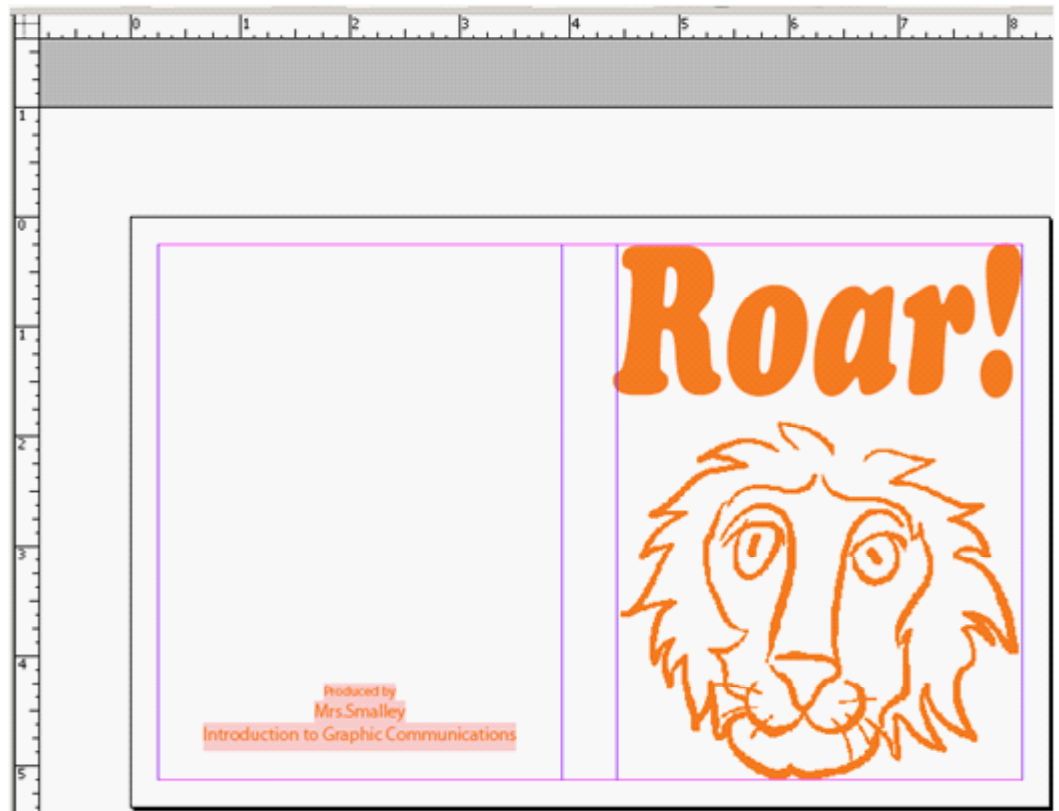
### InDesign Layout Size

Your stationary is 2 sided (front and back). These dimensions give you the layout in **InDesign** so **that you have 2 sides to place your artwork on.**



This stationary folds in half. The lion in the example is the front and the text is on the back. On the back include your name and your class.

Take a look at examples in class.



### **STEP 3 - InDesign**

Using InDesign - **Place** all items from Illustrator into InDesign

InDesign - **embed** all files - Links palette, embed files

**Print** your stationary

Show 3rd hour Mrs. Costa / Mrs. Smalley 4th hour Mr. Carney / Mrs. Smalley

### **STEP 4 - InDesign with your partner**

Get both InDesign files on one computer with your partner (flash drive/email)

InDesign setup to combine both stationary cards together:

8.375 x 10.75 with .25 margins

Create a blue guide (from ruler) at 5.375 to split your document in half

Print document with both cards on it.

Turn in final copy of merged greeting cards

### **STEP 5 - InDesign**

**Staple together:**

Student 1 separate greeting card (8.5 x 11 sheet)

Student 2 separate greeting card (8.5 x 11 sheet)

Combined file with 2 greeting cards on it (8.5 x 11 sheet)

Color choice small sample with ink color written on it